



OFFICE BUILDING FOR LEASE

4620 FORTRAN DR. SAN JOSE, CA 95134



Presented By

STEPHEN GUGGENHEIM

669.300.6049
steve@guggenheimrgi.com
CalDRE #01912835

AL GUGGENHEIM

669.300.6041
al@guggenheimrgi.com
CalDRE #00943363

ERIC JONG

669.300.6048
eric@guggenheimrgi.com
CalDRE #01486494



GUGGENHEIM | GROUP

Guggenheim Group • 792 Meridian Way • San Jose, CA 95126 • 669.300.6040 • guggenheimrgi.com

No warranty or representation expressed or implied is made as to the accuracy of the above information. This information is submitted subject to errors, omissions, change of price, rental rates or other conditions, withdrawal notice, and any special listing conditions.

4620 FORTRAN DRIVE

San Jose, CA 95134

EXECUTIVE SUMMARY



OFFERING SUMMARY

Lease Rate: Negotiable

Available SF: 19,880 SF

Zoning: A(PD)

Building Size: 39,760

PROPERTY OVERVIEW

The second floor of this two story Office/R&D/Flex building can be leased. There is a Common loading Dock and there are Grade Level Doors. Tenant Improvement's are available for qualified tenants.

PROPERTY HIGHLIGHTS

- Easy Access to 237, 880 and N. First Street
- Two Story Office/R&D/Flex Building
- Common loading Dock and Grade Level Doors
- Tenant Improvement's available for qualified tenants.

STEPHEN GUGGENHEIM
669.300.6049
steve@guggenheimrgi.com
CalDRE #01912835

AL GUGGENHEIM
669.300.6041
al@guggenheimrgi.com
CalDRE #00943363

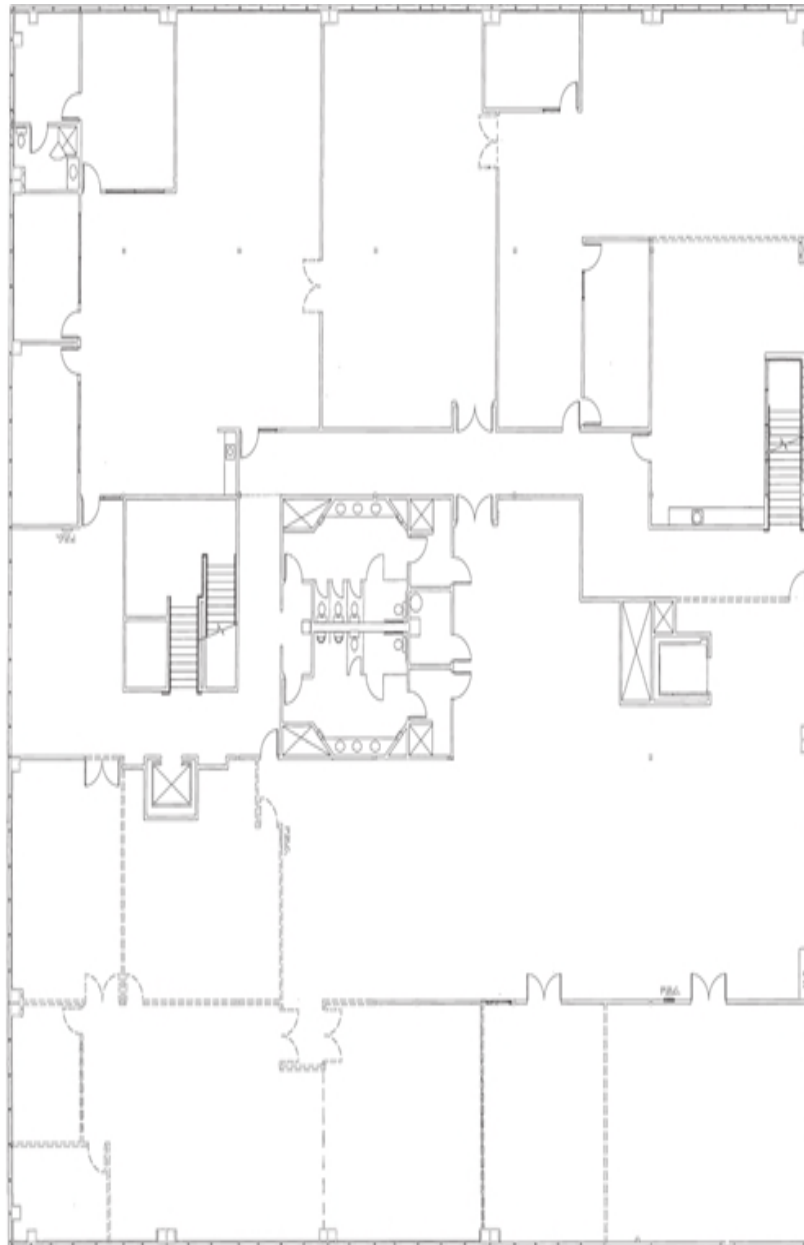
ERIC JONG
669.300.6048
eric@guggenheimrgi.com
CalDRE #01486494



4620 FORTTRAN DRIVE

San Jose, CA 95134

FLOOR PLANS



SECOND FLOOR

STEPHEN GUGGENHEIM
669.300.6049
steve@guggenheimrgi.com
CalDRE #01912835

AL GUGGENHEIM
669.300.6041
al@guggenheimrgi.com
CalDRE #00943363

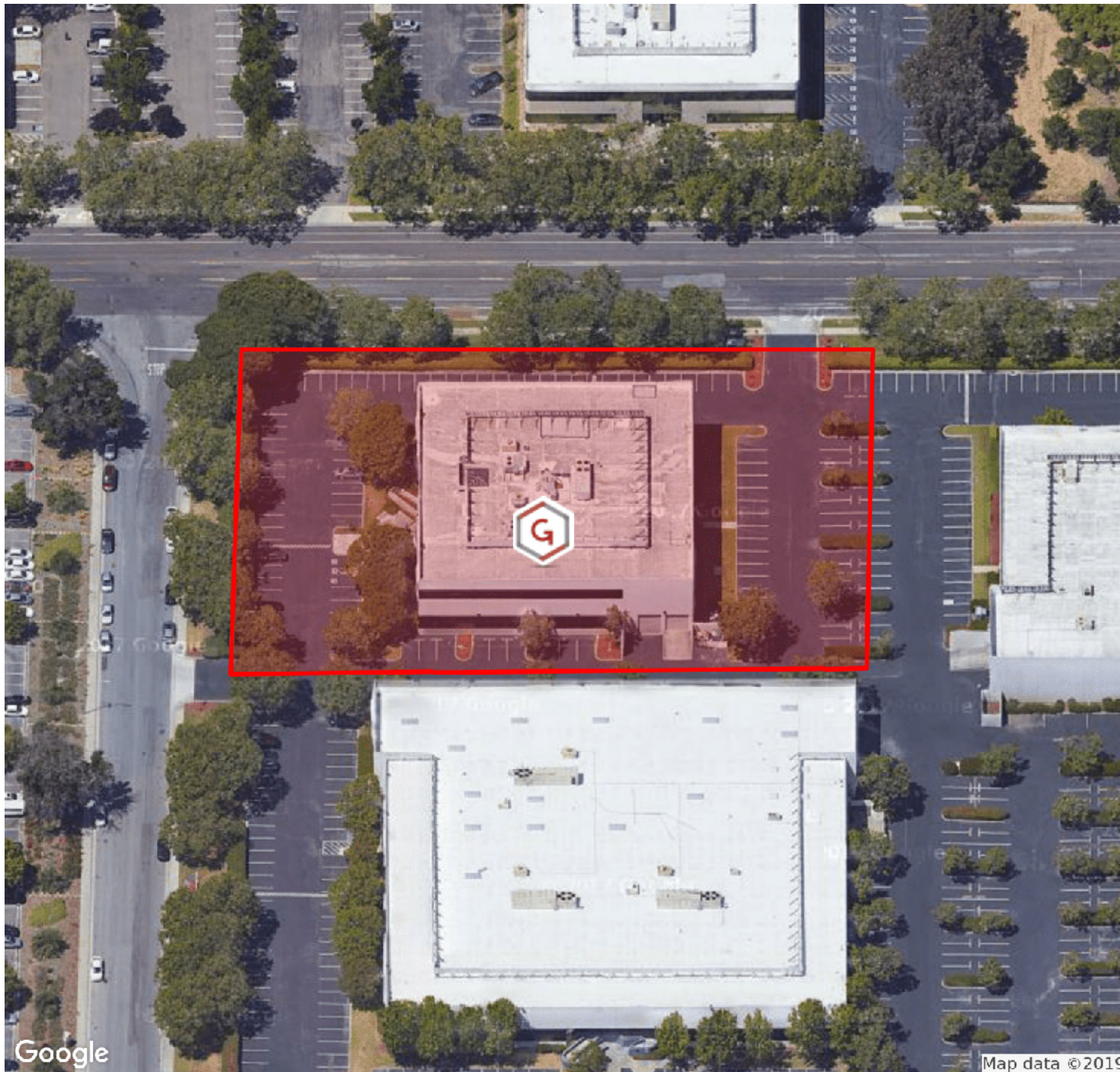
ERIC JONG
669.300.6048
eric@guggenheimrgi.com
CalDRE #01486494



4620 FORTRAN DRIVE

San Jose, CA 95134

AERIAL MAP



STEPHEN GUGGENHEIM
669.300.6049
steve@guggenheimrgi.com
CalDRE #01912835

AL GUGGENHEIM
669.300.6041
al@guggenheimrgi.com
CalDRE #00943363

ERIC JONG
669.300.6048
eric@guggenheimrgi.com
CalDRE #01486494

