



OFFICE SPACE FOR LEASE

4800 PATRICK HENRY DR. SANTA CLARA, CA 95054



Presented By

STEPHEN GUGGENHEIM

669.300.6049
steve@guggenheimrgi.com
CalDRE #01912835

AL GUGGENHEIM

669.300.6041
al@guggenheimrgi.com
CalDRE #00943363

ERIC JONG

669.300.6048
eric@guggenheimrgi.com
CalDRE #01486494



GUGGENHEIM | GROUP

Guggenheim Group • 792 Meridian Way • San Jose, CA 95126 • 669.300.6040 • guggenheimrgi.com

No warranty or representation expressed or implied is made as to the accuracy of the above information. This information is submitted subject to errors, omissions, change of price, rental rates or other conditions, withdrawal notice, and any special listing conditions.

4800 PATRICK HENRY

Santa Clara, CA 95054

EXECUTIVE SUMMARY



OFFERING SUMMARY

Lease Rate: Negotiable

Available SF: 58,320 SF

Zoning: ML

Year Built: 1979

Building Size: 58,320

PROPERTY OVERVIEW

4800 Patrick Henry Drive is located in the Marriott Business Park with easy access to Hwy 101, Hwy 237, Great America Parkway and Lawrence Expressway, and just up the block from the New Levi's Stadium.

This property is available with TENANT IMPROVEMENTS FOR QUALIFIED TENANTS for the interior and the exterior of the building. 4800 Patrick Henry is a free standing building with dock high loading and warehouse space. There is ample parking (Ratio 4:1000).

PROPERTY HIGHLIGHTS

- TENANT IMPROVEMENTS AVAILABLE for qualified tenants for interior and exterior of the building
- Prime office location
- Near Highway 237, 101, and Great America Pkwy
- Near the New Levi's Stadium
- Ample Parking (Ratio 4:1000)

STEPHEN GUGGENHEIM
669.300.6049
steve@guggenheimrgi.com
CalDRE #01912835

AL GUGGENHEIM
669.300.6041
al@guggenheimrgi.com
CalDRE #00943363

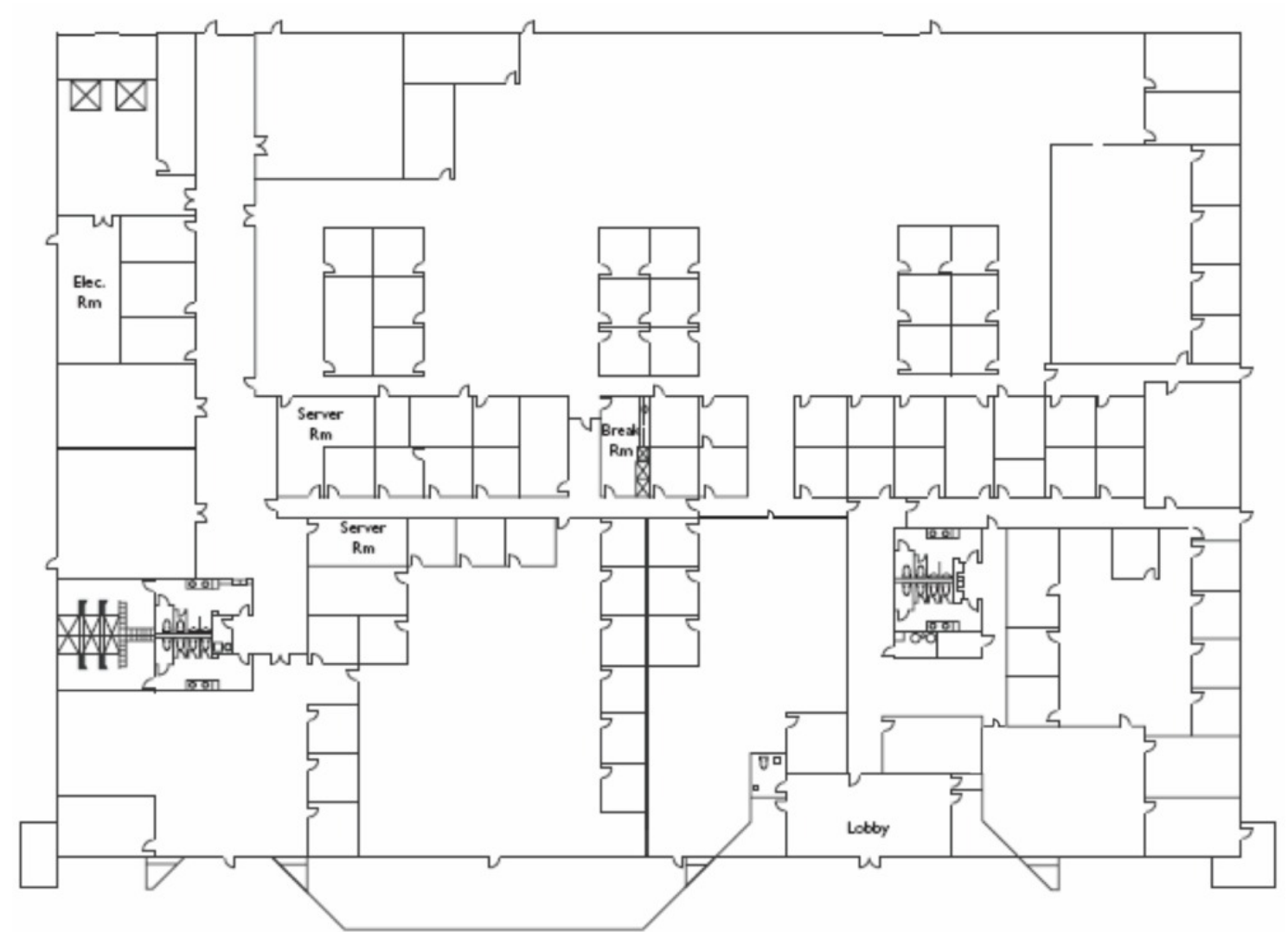
ERIC JONG
669.300.6048
eric@guggenheimrgi.com
CalDRE #01486494



4800 PATRICK HENRY

Santa Clara, CA 95054

FLOOR PLANS



STEPHEN GUGGENHEIM
669.300.6049
steve@guggenheimrgi.com
CalDRE #01912835

AL GUGGENHEIM
669.300.6041
al@guggenheimrgi.com
CalDRE #00943363

ERIC JONG
669.300.6048
eric@guggenheimrgi.com
CalDRE #01486494

